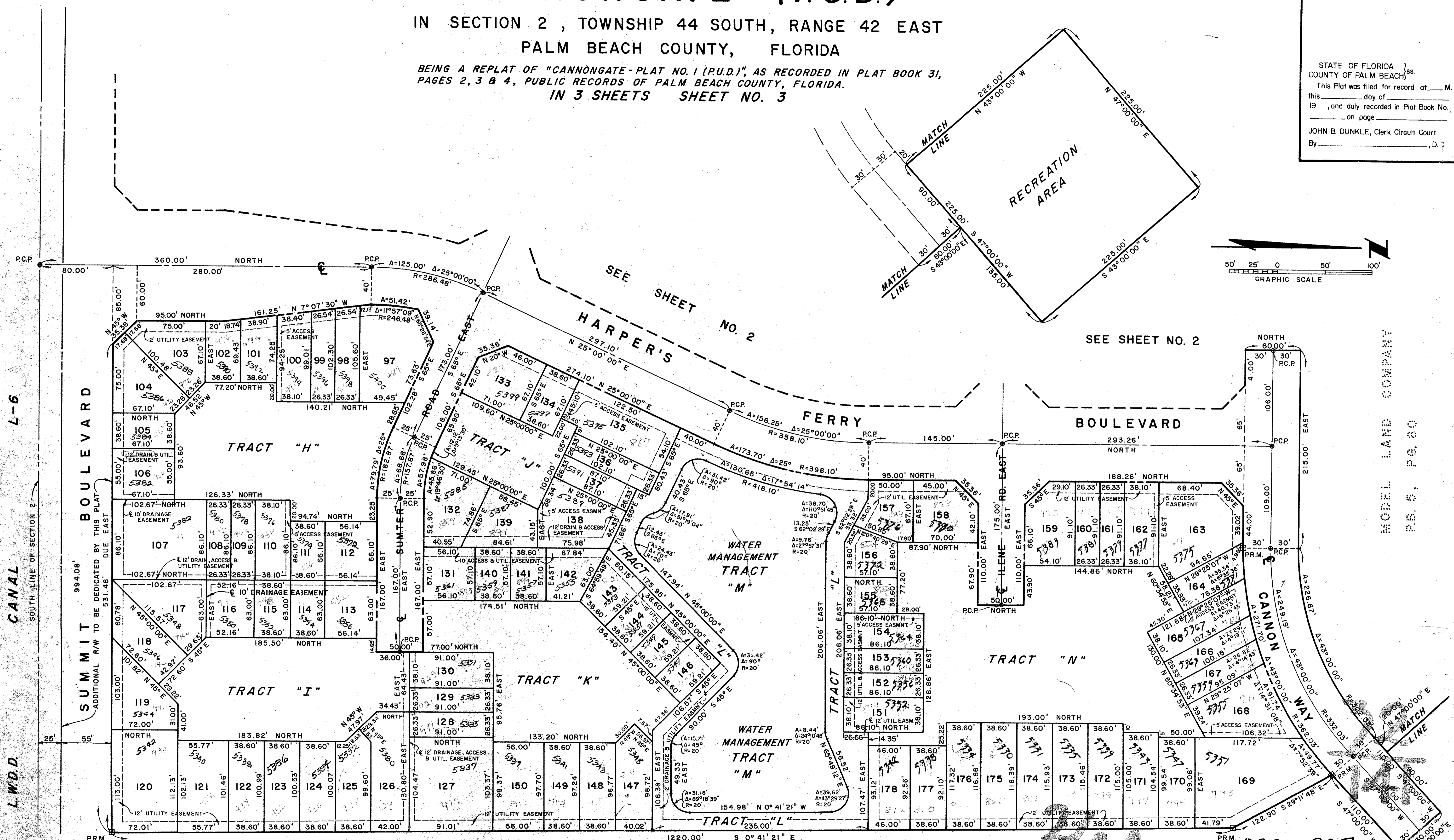
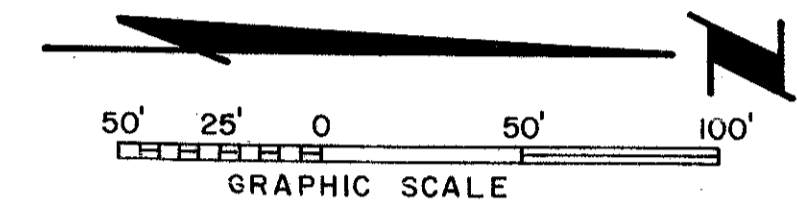


# PLAT NO. 1-A CANNONGATE (P.U.D.)

IN SECTION 2, TOWNSHIP 44 SOUTH, RANGE 42 EAST  
PALM BEACH COUNTY, FLORIDA

BEING A REPLAT OF "CANNONGATE-PLAT NO. 1 (P.U.D.)" AS RECORDED IN PLAT BOOK 31,  
PAGES 2, 3 & 4, PUBLIC RECORDS OF PALM BEACH COUNTY, FLORIDA.  
IN 3 SHEETS SHEET NO. 3

STATE OF FLORIDA }  
COUNTY OF PALM BEACH }  
This Plat was filed for record at \_\_\_\_\_ M.  
this \_\_\_\_\_ day of \_\_\_\_\_  
19 \_\_\_\_\_, and duly recorded in Plat Book No. \_\_\_\_\_  
on page \_\_\_\_\_  
JOHN B. DUNKLE, Clerk Circuit Court  
By \_\_\_\_\_, D. P.



L-6  
CANAL  
SUMMIT BOULEVARD  
L.W.D.D.  
SOUTH LINE OF SECTION 2

SEE SHEET NO. 2  
SEE SHEET NO. 2  
MODEL LAND COMPANY  
P.B. 5, P. 80

MODEL LAND COMPANY  
P.B. 5, P. 80

# CANNONGATE 1-A

THIS INSTRUMENT WAS PREPARED BY  
R. SHEPARD IN THE OFFICE OF

ROSSI AND MALAVASI  
ENGINEERS, INC.  
WEST PALM BEACH,  
FLORIDA

PLAT NO. 1-A  
CANNONGATE (P.U.D.)

Date	AUGUST, 1976	Designed	R. SHEPARD	Scale	1" = 50'	Sheet	3 of 3
Drawn	R. ANDERSON	Job No.	3013-76				
Approved		Checked		File No.	S-1126-000-A		

444/142  
0220-307